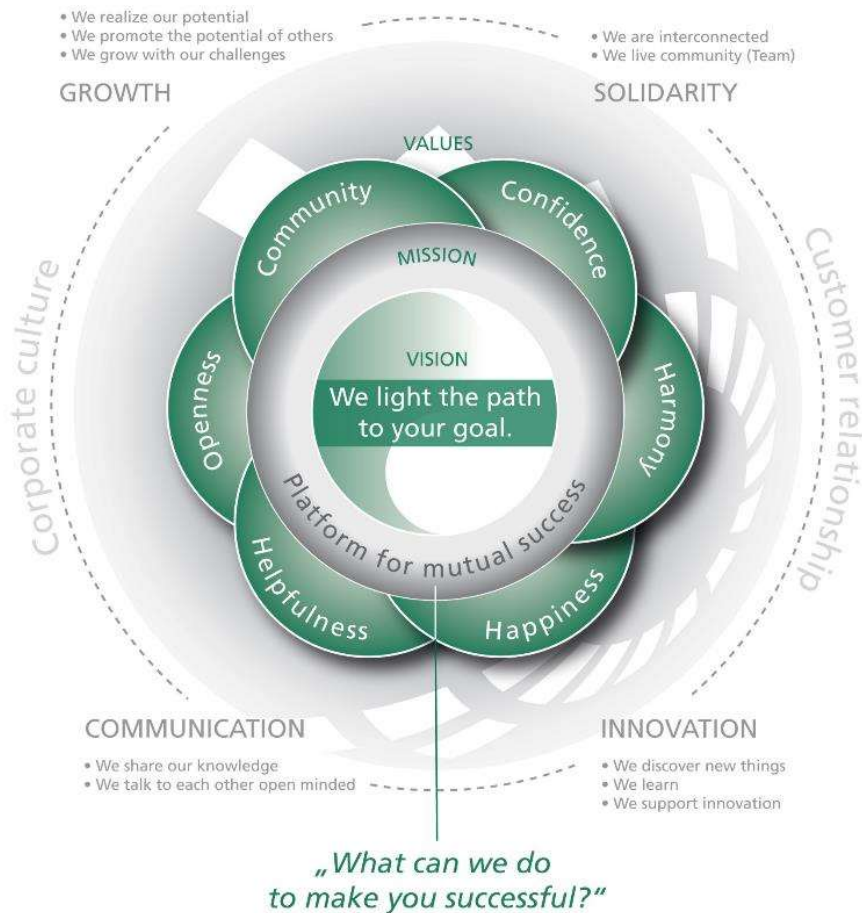


Our Identity - Vision, Mission, Values, Company



ChipGlobe in a nutshell

- ASIC /RTL2GDS & Functional Verification, RTL Design, Test Engineering, Firmware, FPGA, and Embedded System development from idea to prototype
- 15+ years of successful long-term project expertise and excellent QoR with Global Semiconductor Companies. Long term and good relationships in projects
- More than 100 senior experts
- Working successfully with our customers with ChipGlobe ODC Model
- Embedded Systems Solution Provider: Infineon Security Partner Network (ISPN) + Infineon Design House